



Presenter: Jackie Forss
New Jersey Conference

Adventurer Club Organization & Programming

Introduction & Opening Prayer

Jackie Forss
Adventurer Assoc. State
Coordinator

HELLO

My name is



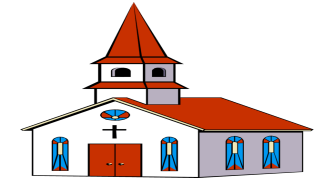


Club **Organization**

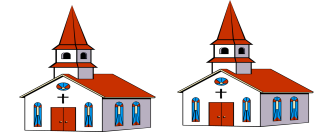
Denominational Flow Chart

- **Local Church**: is governed by elected officers and departmental leadership. The Adventurer Club Director is elected each year.
- **Local Conference**: is made up of all the local churches.
- **Union**: is a combination of several local conferences
- **Division**: is a combination of several Unions or Missions. The North American Division (NAD) is comprised of 9 Unions and 1 Mission. Headquarters are in Silver Spring, MD.
- **General Conference**: is comprised of 13 Divisions, coordinating church work worldwide. Headquarters are in Silver Spring, MD.

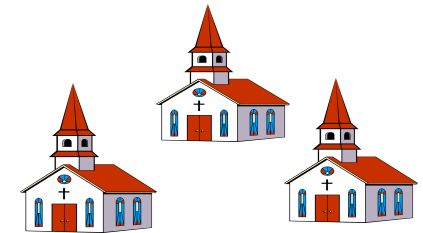
Local Church



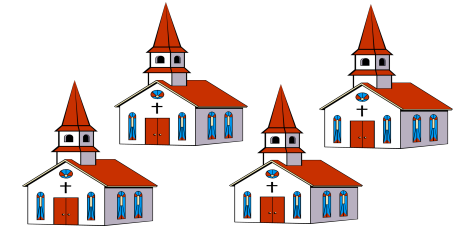
New Jersey Conference



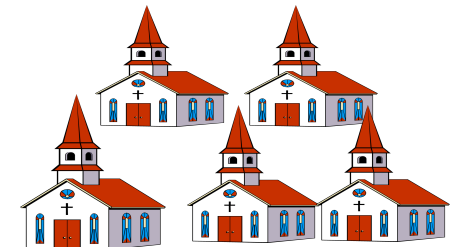
Columbia Union



NAD



General Conference



Staff & Coordinators



YOUTH DIRECTOR
Carl Rodriguez
crodriguez@njcsda.org
Cell. (410) 241-4919
Office (609) 802 0879



YOUTH ADMINISTRATIVE ASSISTANT
Cinthia Portanova
cinthia@njcsda.org
Cell. (318) 716-2435
Office (609) 802 0873



GENERAL COORDINATOR
Reina Zapata
Reina1203@hotmail.com
(201) 780-2421



STATE COORDINATOR
Laurinda Jorge
Cell. (973) 951-8060



ASSISTANT STATE COORDINATOR
Claudie Seide
Cell. (201) 233-4396



ADVENTURER BIBLE GAME COORDINATOR
Claudia Garcia del Puerto
claudiapgdp@hotmail.com
(201) 220-0451



DRILLING & MARCHING COORDINATOR
John Rivera
jriv767@gmail.com
(609) 332-6287

Zone/Area Distributions

Northeast

Clifton Sp Co
Filipino International
Garfield Sp
Hakensack Eng
Nuevo Amanecer
Passaic Sp I
Passaic Sp II
Paterson Eastside Sp
Paterson South Sp
Paterson Temple Sp
Ridgefield Park Sp Co
Waldwick Eng
Wayne Eng

Northwest

Dover Sp
Hackettstown Eng
Hackettstown Sp Co
Lafayette Eng
Newton Sp Co
Phillipsburg Eng
Rockaway Eng
Tranquility Eng
Morristown Eng
Morristown Sp

Jersey City

Bayonne Sp Co
El Faro Sp
Filipino Eng
Guttenburg Sp
Jersey City Heights Eng
Jersey City Heights Sp
Jersey City Sp
La Esperanza Sp
Maranatha Sp
Phadelphie Fr
Union City Sp
West New York Sp

Newark

All Nations
Community Eng
Belleville Sp
Bethel Fr
Bethesda Fr
Bloomfield Sp CP
Elizabeth Eng
Elizabeth Sp
Harrison Sp
Irvington Sp
Luso-Brazilian
Maranatha Fr
Newark Eng
Newark Sp
Nueva Vida Sp
Port Elizabeth Sp
Sion Sp

Perth Amboy

Carteret Sp
Casa de Restauracion Sp
Central New Jersey Korean
Edison Sp
Hungarian International
Indian Eng Co
La Victoria Sp
New Brunswick Eng
New Brunswick Fr Co
New Brunswick Sp
Perth Amboy Sp
Pioneer Community Eng Co
Rahway Sp

Piscataway

Flemington Sp
Bound Brook Sp Co
Dunellen Sp Co
First Bilingual
Lake Nelson Academy
CP Eng
Lake Nelson Eng
Somerville Sp
First Filipino
Indonesian Pioneer
Plainfield Sp

Central West

Crosspoint Mission
Caleb Eng
Highstown Eng
Highstown Sp
Princeton Eng
Robbinsville Eng
Trenton CP Eng
Trenton Sp

Central East

Brown Mills Eng
Collingwood Park Eng
Freehold Sp Co
Lakewood Sp
Long Branch Brazilian
New Birth CP Eng
The Grace Place Eng
Toms River Eng
West Long Branch Sp
Asbury Park CP Eng

Camden

Burlington Eng
Camden Sp
Cherry Hill Eng
Gibbsboro Sp
Laurelwood Eng
Mt. Holly Eng
Mt. Holly Sp
Pine Hill Sp
Willingboro Eng
Woodbury Eng

Southern

Bridgeton First Eng
Bridgeton Sp
Bridgeton II Sp
Hammonton Sp
Panamericana Sp
Redemption Chapel
Sp Mission Caleb
Salem Eng
Sinai Sp CP
Swedesboro Sp CP
Vineland Eng
Vineland Sp
Williamstown Eng

Southeast

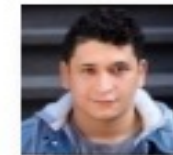
Atlantic City Sp
Atlantic County Eng
Cape May Court
House Eng
Parkway South Eng
Wildwood Sp



Area Coordinators



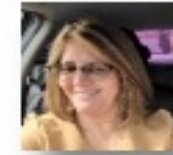
NORTHEAST COORDINATOR
Open Position
For more info
(609) 802-0879 or (609) 802 0873



NORTHWEST COORDINATOR
Jerson Flores
Jerson2497@icloud.com
(973) 876-9831



JERSEY CITY COORDINATOR
OMAR ARELLANO
CELL. (973) 914-5760



NEWARK COORDINATOR
Lourdes Hernandez
(973) 392-6342



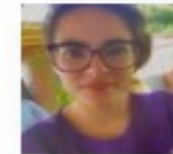
PERTH AMBOY COORDINATOR
Open Position
For more info
(609) 802-0879 or (609) 802 0873



PISCATAWAY COORDINATOR
Open Position
For more info
(609) 802-0879 or (609) 802 0873



CENTRAL EAST COORDINATOR
Open Position
For more info
(609) 802-0879 or (609) 802 0873



CENTRAL WEST COORDINATOR
Mabel Alvarez
(609) 433-0552



CAMDEN COORDINATOR
Open Position
For more info
(609) 802-0879 or (609) 802 0873



SOUTHEAST COORDINATOR
Jackie Forss
(609) 310-0834



SOUTHERN COORDINATOR
Greysi Morales
(856) 392-0420



QUESTIONS & COMMENTS



How to Start an Adventurer Club

- **Talk to your Pastor**
 - **Connect with your Conference Leaders
(Adventurer Area Coordinator)**
 - **Elect a Director/ Associate Director**
- The nominating committee/church board will
recommend the Adventurer Club Director
/Associate Director**



Form an Adventurer Club Executive Committee

- In a large church, the committee may be helpful. Involve the Adventurer Club leadership, Pastor, Kindergarten/ Primary Sabbath School Leader, Church School Teacher(s) of Adventurer age children, Adventurer parents. The Adventurer Director is chairperson.
- This group sets major policies for operation, goals, objectives, and coordinates the club calendar with church calendar. This committee can give direction on the selection of additional staff.



This Photo by Unknown Author is licensed under [CC BY-SA-NC](#)



Church Board Authorization

- Submit your plans to the Church Board for authorization to organize an Adventurer Club.
- This is very important because this vote allows for you to let the Conference know that your club is official.



CLUB REGISTRATION

IS ONLY AVAILABLE

ONLINE

CONNECT TO WWW.NJCYOUTH.COM/ADVENTURERS



INCLUDED IN THE \$10 REGISTRATION

ADVENTURER

1. Yearly Club Membership
2. [12 Months Insurance \(NEW\)](#)
3. [Activities Book](#)
4. [Record Card](#)
5. Class Pin (if invested)
6. 1 Adventurer Club Sticker
7. [The baptismal pin \(if baptized\)](#)

STAFF & VOLUNTEER

1. Yearly Club Membership
2. [12 Month Insurance \(NEW\)](#)
3. 1 Adventurer Club Sticker

DIRECTOR

1. Yearly Club Membership
2. [12 Month Insurance \(NEW\)](#)
3. 1 Adventurer Club Sticker
4. Classes Record Chart **(NEW)**
5. [Adventurer Club Starter kit](#) for clubs that register 15 or more Staff/Parent/Volunteer (Including Director).

PARENT

1. Yearly Club Membership
2. [12 Month Insurance \(NEW\)](#)
3. Parent Pin
4. 1 Adventurer Club Sticker

Bringing it Home

Gather

Gather Support of Parents

Meet with parents of Adventurer age children and have them spread the word.

Call

Call an Organization meeting

Schedule a meeting with those who would be interested in the Adventurer Ministry. Explain the goals of the ministry. Appeal for volunteers.

A photograph of a church interior. A large congregation of people, mostly older adults, is seated in wooden pews, facing the front of the church. On the stage, a man is standing at a wooden pulpit, addressing the assembly. To the right of the pulpit, there is a small Christmas tree and other musical equipment. The church has a modern design with large windows and a balcony with a railing. The text "Inform the Congregation" is overlaid on the right side of the image in a large, bold, black font.

Inform the Congregation

Let the church know about the club and how it's going to minister to families in church and the community.

Recruit Volunteers

1. Identify adults who love children and are willing to commit to the club.

2. Members of the Adventurer Team need to be excited about kids.



This Photo by Unknown Author is licensed under [CC BY-SA](#)



QUESTIONS & COMMENTS



Adventurer Club Team: Include the Parents!

Director

Associate Director(s)

Instructors for each curriculum level

Instructors for patch requirements

Family Network Coordinator



This Photo by Unknown Author is licensed under [CC BY-NC](#)

Participate in Adventurer Club Ministry Training



**Adventurer
Basic Staff
training
course**



**Put dates on
your club
calendar**



**Encourage
staff to
attend**



**Learn
from the
seminars**



**Meet with
others who are
involved with
Adventurers
and share ideas**



**Those unable to
attend, schedule
time to share the
basics, so you all
can be on the
same page**

Pray

- **Pray for leaders.**
- **Pray for families.**
- **Pray that God will send the right people to join your Adventurer Club Team.**



Forms to be Kept in the Club Files



Resources
[njcyouth.com/
adventurers](http://njcyouth.com/adventurers)



Club Yearly
Registration
On-line only



Adventurer &
Staff
Application
Form



Adventurer &
Staff
Medical
Information



Guidelines for
Volunteers &
Caregivers

Evaluation & Other Forms for the Club



Club
Inspection



Adventurer
Sabbath



Induction



Investiture



I Will Go
Projects
Due 3/31/23



QUESTIONS & COMMENTS



Programming

Adventurer Levels



Pre- Kindergarten



Kindergarten



1st Grade



2nd Grade



3rd Grade



4th Grade

Discovery Levels



1-2 y/o



3 y/o



4 y/o



5 y/o

Planning the Yearly Calendar



Creating a Budget

Typical Income

Club membership fees
Subsidy from the church
Fundraising
Donations

Typical Expenses

Uniform insignia
Stars, Chips, and Awards
Certificates
Refreshments
Craft supplies
Equipment
Outreach projects
Field trip costs
Others.....



Club

Meeting

Outline

Opening Exercises

- Fall in by classes
- Pledges: American, Christian, & Bible
- Adventurer Pledge & Law, Song
- Prayer

Creative Worship

- Sing a song
- Story or object lesson or skit

Restroom Break

Classwork by level

Group Activity

Choose one of the following:

- Start a new award
- Complete an award
- Play a fun game
- Craft

Clean up

Closing

- Announcements
- Prayer
- Dismissal

FIRST CLUB MEETING

**Full of FUN and
EXCITEMENT!!!**

**Everyone should be
involved in the Activities**

**(Parents, Staff, and
Children)**





QUESTIONS & COMMENTS



Adventurer Uniform

- *The uniform makes the Adventurer Club real to its members, especially the children. The uniform becomes an emblem of a standard, builds loyalty to the club, and brings members into a sense of community. The uniform should always be neat, clean, and worn with pride.*



Dress Uniform for the Adventurer

Girls

- Navy blue pleated jumper
- Light blue or white blouse with Peter Pan/straight collar and short/long sleeves

Boys

- Navy blue pants
- Light blue or white shirt with straight collar and short/long sleeves

Boys and Girls

- Black shoes (uniform within club)
- Navy blue socks; if girls wear white blouses white socks may be worn (uniform within club)
- Scarf and Slide: Burgundy Adventurer scarf worn with an Adventurer slide.
- Sash: Navy blue sash is worn from the right shoulder to the left hip and displays Adventurer stars, chips, awards, pins, event patches, and other club related items
- Navy blue beret is optional (uniform within club)





Do I have to buy a new uniform for my Adventurer?

Clubs have lots of options when it comes to uniforms. One option is to have a staff member who is responsible for measuring each Adventurer and ordering uniforms for each. Another option is to have parents purchase uniforms for their child(ren) that are in the club.

- **Here are some options that can reduce uniform expenses:**
 - **Provide rental options**
 - **Arrange a time for parents to trade uniforms**
 - **Set-up a system where the club loans out uniforms**
- **The key to any of these options is to have a staff member who is responsible for implementing the plan your club adopts.**




RESOURCES FOR SUPPLIES

- **Advent Source –clothing, uniform patches, chips, awards, workbooks, etc.**
- **Pathfinder Shirts-uniform, club crests, custom t-shirts, patches (Old Adventurer logo), pins, etc.**
- **New Jersey Conference- Conference patches for shirts**



QUESTIONS & COMMENTS





**When we pray,
God hears more
than we say,
answers more than
we ask,
gives more than
we imagine...
in HIS own time
and HIS own way.**

[This Photo](#) by Unknown Author is licensed under [CC BY](#)

CLOSING PRAYER
